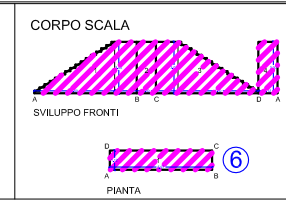
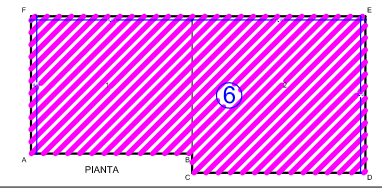
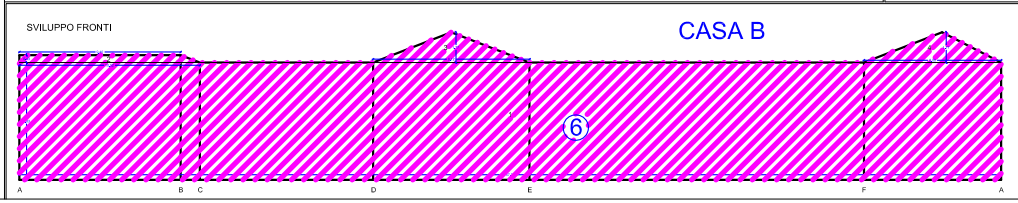
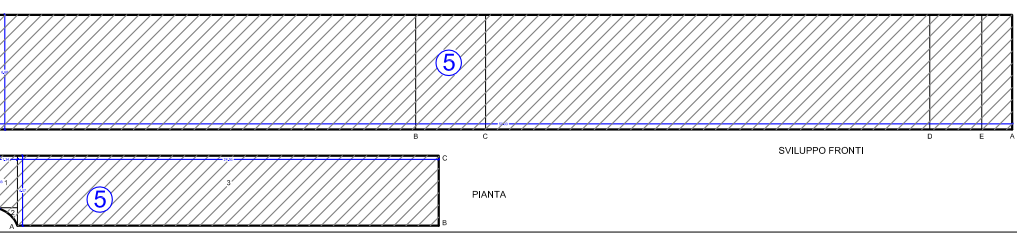
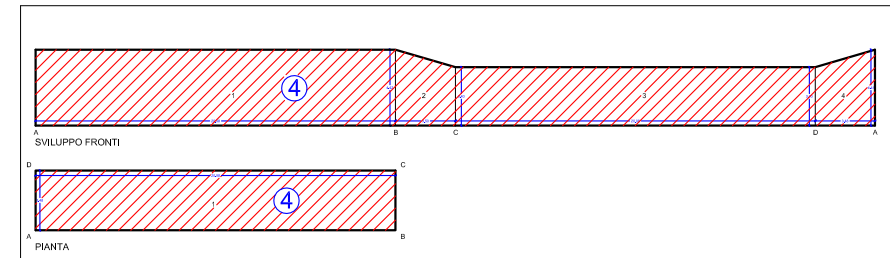
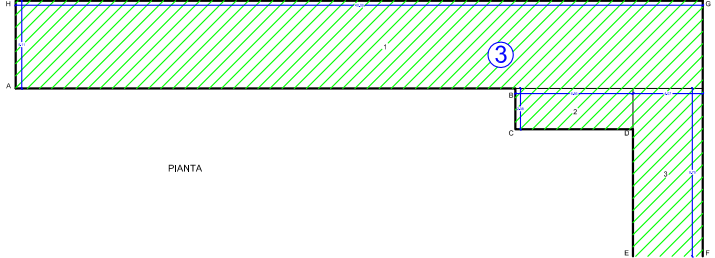
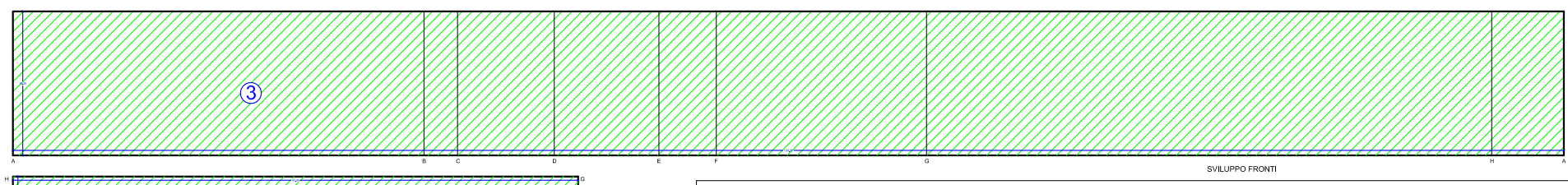
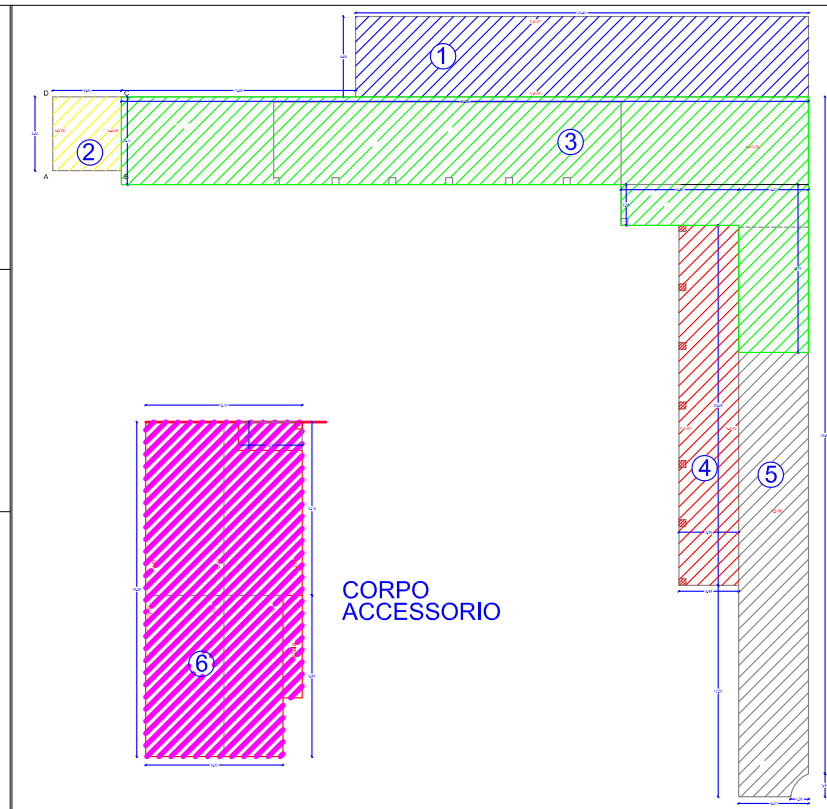
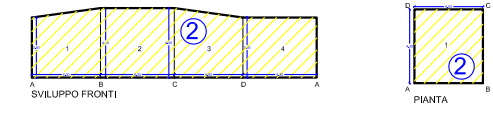
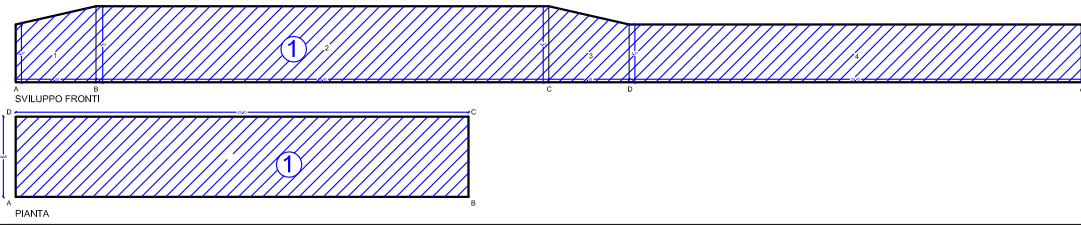


**CORPO DI FABBRICA PRINCIPALE**



SOMMARIO DEI DATI GEOMETRICI		SOMMARIO DEI DATI VOLUMETRICI	
1	100	1	100
2	100	2	200
3	100	3	300
4	100	4	400
5	100	5	500
6	100	6	600
<b>TOTALE</b>		<b>TOTALE</b>	
6	600	6	600

**STUDIO ANGELO E DAVIDE DE FRANCESCO**  
ARCHITETTI IN LOANO

Comune di Loano  
PROGETTO RELATIVO AD INTERVENTI DI DEMOLIZIONE,  
RICOSTRUZIONE E AMPLIAMENTO DEL COMPLESSO UBICATO  
IN VIA AURELIA A CATASTO fg 14 mapp 284 e 574

TAVOLA N°: 10  
OGGETTO : STATO ATTUALE - Calcolo Volume Geometrico  
SCALA : 1/100  
DATA : gennaio 2013

IL PROGETTISTA  
IL PROPRIETARIO

ARCHIVIO ESTI MAGGIO 1/1, LOANO (SV) 17821  
tel. 011/871948 - fax 011/8719241 - studio@defrancesco.com